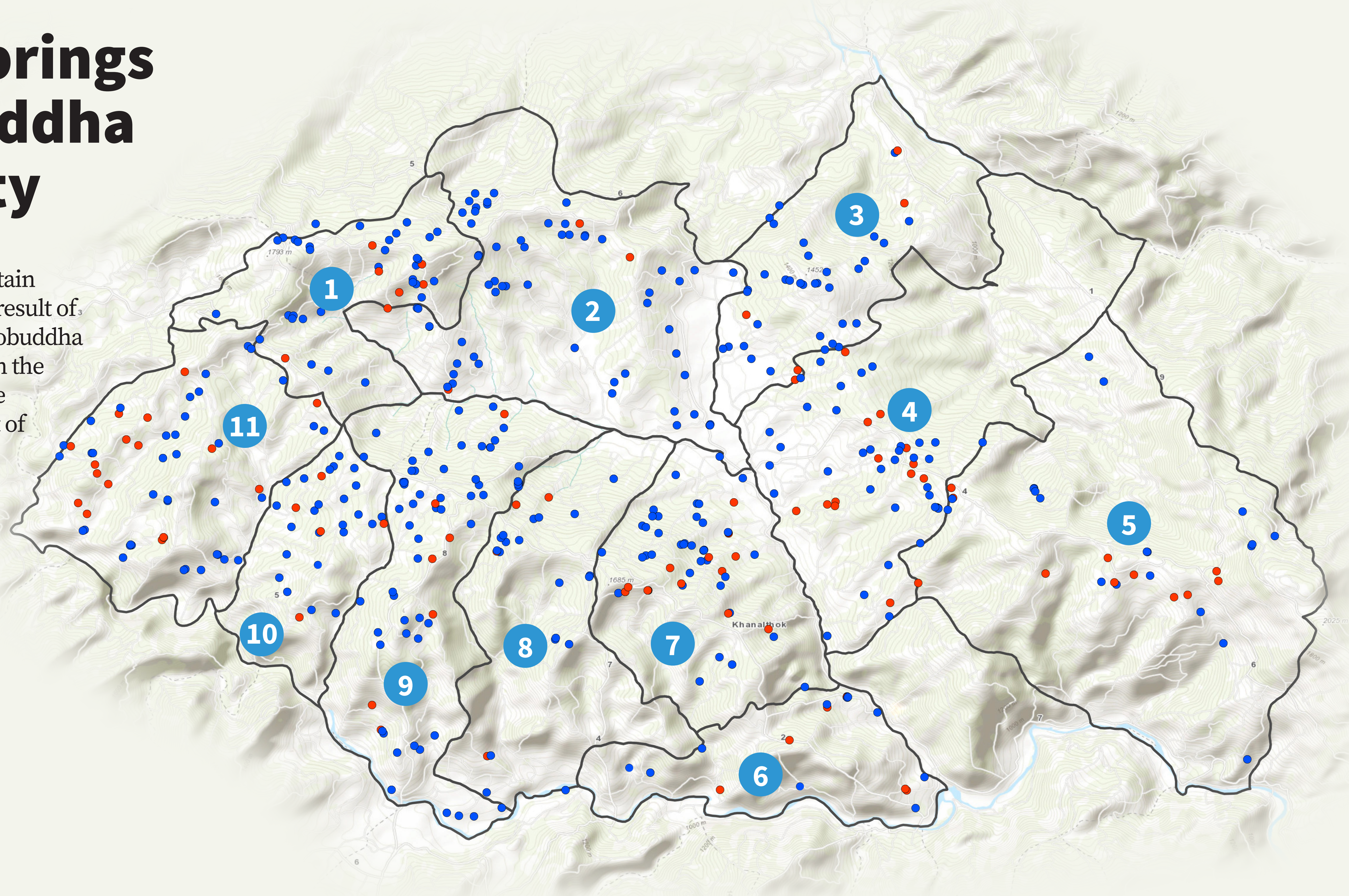


Status of springs in Namobuddha Municipality

Springs are a lifeline for mountain communities. This map is the result of a collaborative survey by Namobuddha Municipality and ICIMOD, with the help of 22 community resource persons from 11 wards, as part of our effort to create a database of springs for Namobuddha Municipality.

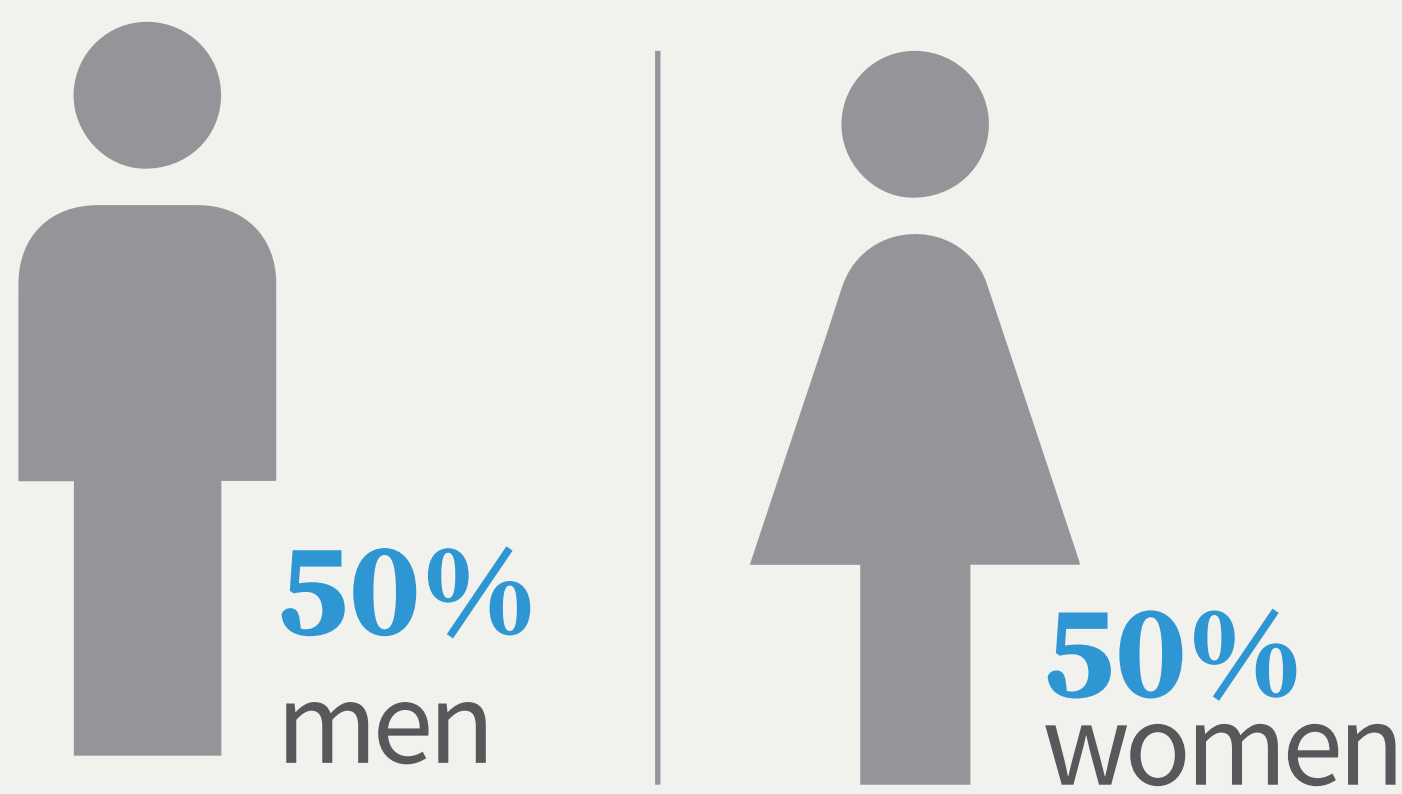


- Active sources
- Dried sources
- Ward
- Namobuddha Municipality

Total number of wards **11**

Community resource persons trained

22 > 2 from each ward

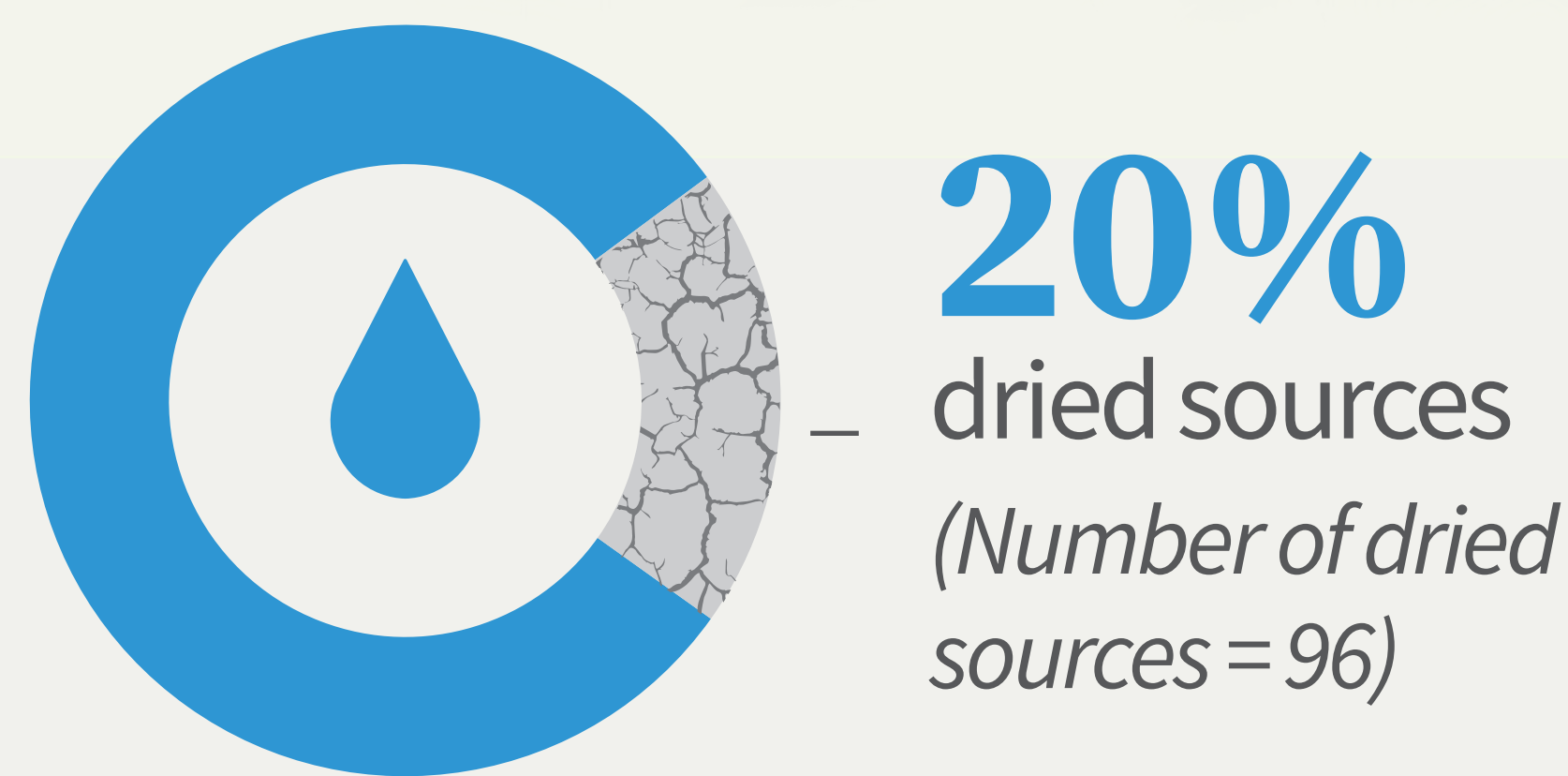


Source status

Number of springs **450**

Number of ponds **30**

Total water sources mapped **480**



Number of active sources **384**

Among the active sources

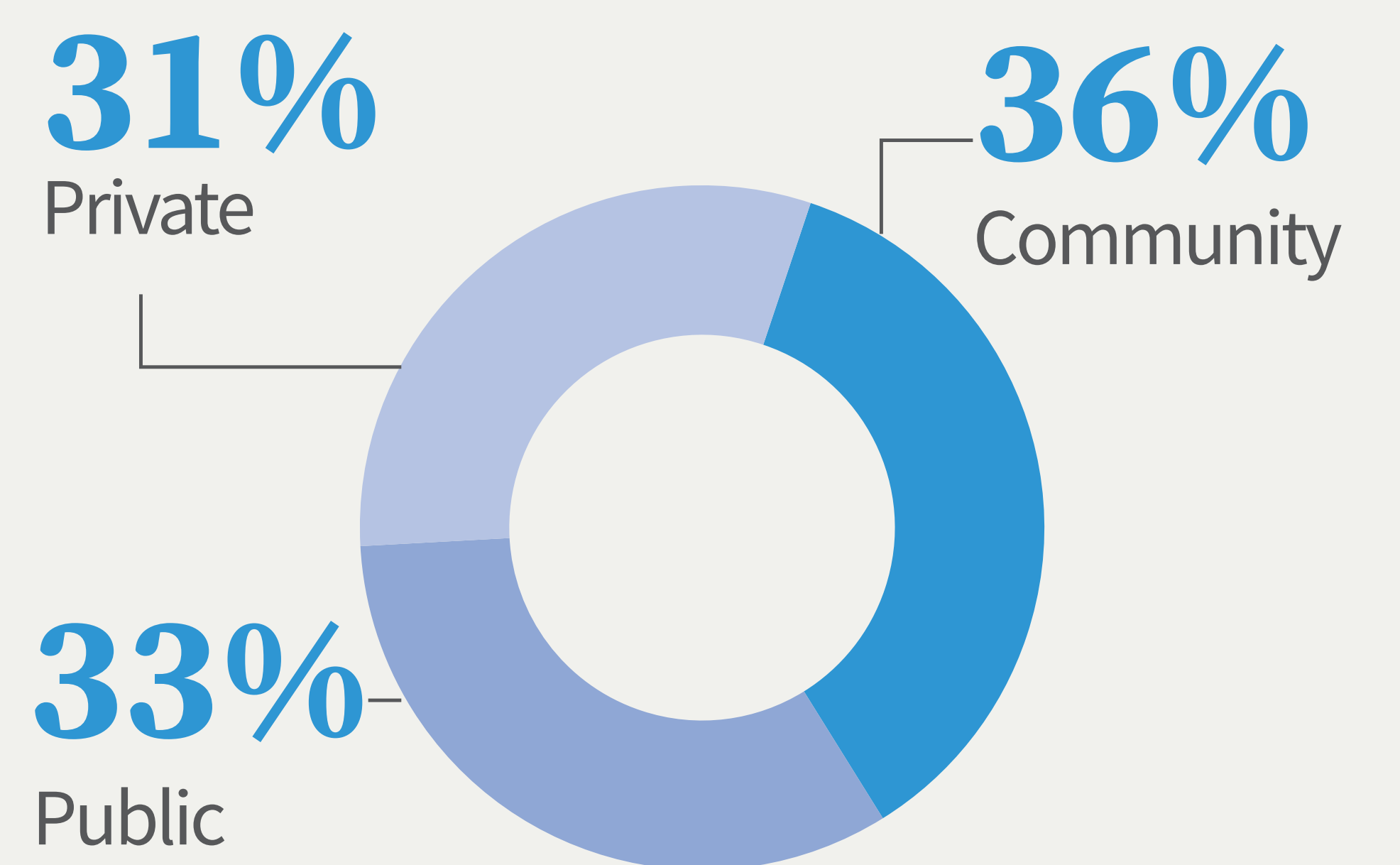


Among the active sources

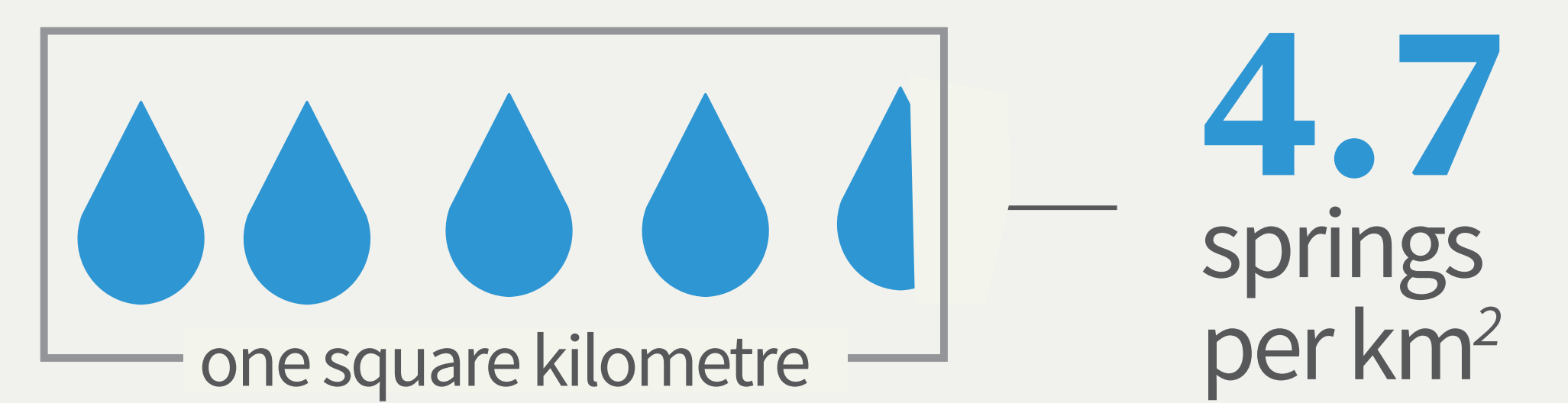
37% are tapped for water supply

Among the active sources **23%** sources have religious/cultural significance
(Naag puja, Kul puja, Bandeviko puja, Kriyakarma)

Source ownership



Spring density



Source dependence on average

Pond dependence **42** Household per pond

Spring dependence **28** Household per pond

